



wedi Subliner® Dry Technical Data Sheet

- Waterproofing and sheet membrane for thinbed mortar installations
- For high performance Vapor proofing in Steam Showers/Steam Rooms
- For use with all types of cement based thinset mortars
- Naturally improving crack protection

Product advantages and use

The wedi Subliner Dry System includes Subliner Dry Sheet Membrane, Sealing Tape, Prefabricated Outside and Inside Corner Tapes as well as various Sealing Collars to waterproof entire structures, especially in shower and steam room construction. wedi Subliner Dry is well suited for sealing measures over pre-existing wall or floor underlayment including drywall. Use Subliner Dry in combination with ceramic tiles, slabs, and natural cast tiles for indoor wall and floor areas. Especially strong performance in steam showers / rooms due to its unique Vapor Resistance rating of 0.09 WVTR/Perms as tested using ASTM E96, method E.

The Subliner Dry is a strong membrane yet very pliable. Installation steps and measuring and cutting grid-lines are printed on its surface for fast working. So that the product's performance properties also work out in a system application, the Subliner Dry System includes many accessories including also the wedi Sealant 620 to treat all seams in these installations and water- and vapor proof as a system. The wedi approach to sealing sheet membrane seams compares to traditional approaches where thinset mortar is applied between sheets at seams. While the sheets may be waterproof in such projects, the thinset taped seams cannot reasonably be expected to waterproof and protect the substrate. The thinset will absorb water and allow its passage too.

Technical Properties ■ wedi Systems

wedi Subliner Dry Technical Properties	
Subliner Dry Sheet Membrane	Polyethylene Core with dual sided Polypropylene fleece surface for perfect thinset mortar anchoring
Fleece Color	Grey/Dark Print
Membrane Width	39 inches (1 m)
Membrane Length	16 ft (5 m) and 98 ft (30 m)
Membrane Thickness	23 Mil
Weight	.06 lb/ sq. ft. / 298 g/m ²
Processing Temperature	41°F to 86°F/ +5°C to + 30°C
Compliance with ANSI 118.10-1999, Standard for Load Bearing, Bonded, Waterproof Membranes for Thinset Ceramic Tile and Dimensional Stone	Passed
Fungus & Micro-organism Resistance	Passed; no growth
Seam Strength ASTM D 751 (Min. Requirement 16 lbs in 2" width)	Passed; 71 lbs
Breaking Strength ASTM D 751 (Min. Requirement 170 PSI)	Passed; 1637 PSI (Longit.)/ 822 PSI Transverse)
Dimensional Stability ASTM D 1204 (0.7% max. length change)	Passed
Waterproofness ASTM D 4068 (Requirement no moisture penetration)	Passed
7 day Shear Strength ASTM C 482 (Min. requirement 50 PSI)	Passed; 152 PSI
7 day water immersion Shear Strength ASTM C 482 (Min. requirement 50 PSI)	Passed; 127 PSI
4 week Shear Strength ASTM C 482 (Min. requirement 50 PSI)	Passed; 132 PSI
12 week Shear Strength ASTM C482 (Min. requirement 50 PSI)	Passed; 72 PSI
100 day water immersion Shear Strength ASTM C 482 (Min. requirement 50 PSI)	Passed; 117 PSI
Water Vapor Permeability acc. to ASTM E96 Method E Desiccant Test at 100°F and 90% RH	0.05 Perms
Robinson Floor Test ASTM C627	Rated 'extra heavy'
Capillarity	0

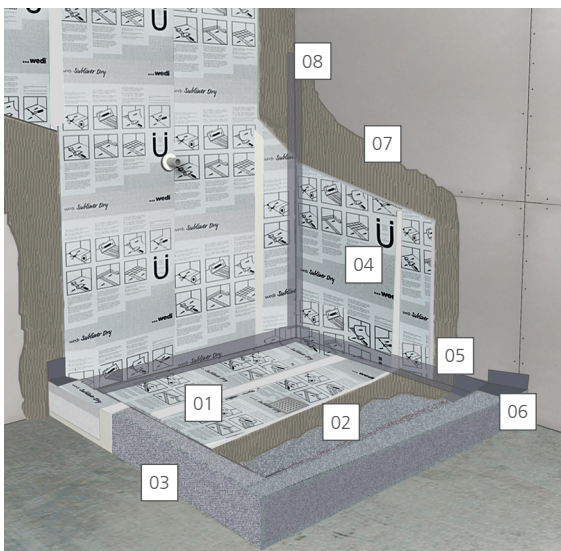
Building and Plumbing Code Compliance	
2015,2012,and 2009 International Plumbing Code (IPC)	Compliant
2015,2012, and 2009 International Residential Code (IRC)	Compliant
2015,2012, and 2009 International Building Code (IBC)	Compliant
2010 and 2005 National Plumbing Code of Canada	Compliant
2012 and 2009 Uniform Plumbing Code (UPC)	Compliant
2012 and 2009 National Standard Plumbing Code (NSPC)	Compliant
ANSI 118.10-2008 Load – Bearing Bonded, Waterproof Membranes for Thinset Ceramic Tile and Dimension Stone Installations	Compliant
ASME A112.6.3-2001 (R07) Floor and Trench Drains	Compliant
Worldwide Approvals Quality Management & Control	ISO 9001-2008
North- America Approvals Code Compliances & Quality Management	ICC ES PMG 1189
Capillarity	0

ICC-PMG 1189 Report ■ National Building Code Compliances

WEDI FUNDO SHOWER SYSTEM AND TILE BACKER BOARD UNDERLAYMENTS	
CSI	DIVISION: 22 00 00 – PLUMBING Section: 22 40 00 – Plumbing Fixtures (Shower System Kit)
Product certification system	The ICC-ES product certification system includes testing samples taken from the market or supplier's stock, or a combination of both, to verify compliance with applicable codes and standards. The system also involves factory inspections, and assessment and surveillance of the supplier's quality system.
Product	wedi Fundo Shower System and Tile Backer Board Underlayments
Listee	wedi Corporation ■ 1160 Pierson Drive, Batavia, IL 60510 www.wedicorp.com
Compliance with the following codes	2021, 2018, 2015, 2012 and 2009 International Plumbing Code® (IPC) 2021, 2018, 2015, 2012 and 2009 International Residential Code® (IRC) 2021, 2018, 2015, 2012 and 2009 International Building Code® (IBC) 2018, 2015, 2012 and 2009 National Standard Plumbing Code® (NSPC) 2018, 2015, 2012 and 2009 Uniform Plumbing Code® (UPC)* 2015, 2010 and 2005 National Plumbing Code of Canada** * Uniform Plumbing Code is a copyrighted publication if the International Association of Plumbing and Mechanical Officials ** National Plumbing Code of Canada is a copyrighted publication of National Research Council Canada
Compliance with the following standards	ANSI A 118.10-2014, Load Bearing, Bonded, Waterproof Membranes for Thin-Set Ceramic Tile and Dimension Stone Installations ASME A 112.6.3-2016, Floor and Trench Drains ICC-ES EG 159, Evaluation Guideline for Composite Backer Board (Approved Dec 2004) ASTM E 96-2016, Standard Test Methods for Water Vapor Transmission of Materials ASTM E 331-00(R16), ASTM E331-00(2016) Standard Test Method for Water Penetration of Exterior Windows, Skylights, Doors, and Curtain Walls by Uniform Static Air Pressure Difference ICC-ES AC 71, Acceptance Criteria for Foam Plastic Sheathing Panels Used as Water Resistive Barriers (Approved Feb 2003, Ed Revised Nov 2018) IAPMO PS 46-2012, Field-Fabricated Tiling Kits IAPMO PS 106-2015e1, Tileable Shower Receptors and Shower Kits
Identification	Packaging label for each system shall include the manufacturer's name or trademark as well as the ICC-ES PMG certification mark.
Installation	The wedi Fundo Shower Systems shall be installed in accordance with the manufacturer's published instructions and the applicable code(s). The wedi Fundo Shower system components shall be assembled and can be customized in the field. When provided drains must comply with ASME A112.18.2/CSA B125.2 as applicable. The wedi pre-sloped, ready-to-tile shower bases may be used in lieu of a CSA B45.5/IAPMO Z124 plastic shower receptors or any liner based shower installations. The wedi drain units do not require weep holes.
Listed Models and Characteristics	The wedi Fundo Shower Systems consist of the following: a) The wedi waterproof Fundo show bases are waterproof, pre-sloped, ready-to-tile floor units. The shower bases with linear and point drainage include factory sealed parts integrated into the floor bases and can be installed with or without curbs in recess, barrier free installations. b) The wedi waterproof building panels which are engineered as a general purpose backer board and underlayment for tile as well as an integral part of the Fundo shower system and consist of a rigid extruded polystyrene foam covered on both sides with a cement-based resin surface and reinforcing mesh for durability and bond performance with tile adhesives. c) the wedi Vapor 85 Building Panel which may be used with or without wedi shower systems. It is a specialized building panel featuring the original wedi Building Panel but with its vapor exposed side protected by wedi Subliner Dry. The wedi Vapor 85 was tested to ASTM E96 Procedure E as a complete assembly with the wedi 620 joint sealing membrane and wedi Subliner Dry sealing tape over seams and fastener points and was found to have a perm rating of 0.03 perms which meets the permeance rating requirement of 0.5 perm or less and can be used in continuous use steam shower/room applications without additional vapor retarders in accordance with Tile Council of North America (TCNA) 2014 Handbook for Ceramic Glass and Stone Tile Installation (SR613-14 and SR614-14). d) The wedi waterproof Fundo Shower system accessories which may include the following waterproof components: wedi pre-sloped curbs, wedi niches, wedi seats, wedi fasteners, wedi drain cover plates, wedi sealants, wedi Fundo drains, wedi Subliner sheet waterproofing membrane system and tapes, with wedi Subliner Dry Bonding Flange drain, wedi Subliner Dry Tub Sealing Tape. The wedi Fundo family line includes the following: Primo, Riolito Neo, Riolito Neo Modular, Riofino, Discreto, Ligno and OneStep. The wedi Fundo Shower system components and assembly for shower installations were proven to be waterproof, water-resistant, and mold resistant when tested in accordance with A118.10-2014 and ASTM E331. The wedi drains have found to comply with with ASME A112.18.2/CSA B125.2 and do not require weep holes.
Conditions of Listing	1. The wedi Fundo Shower Systems shall be installed in accordance with the manufacturer's published instructions and the applicable code(s). 2. The wedi Fundo Shower Systems are manufactured by wedi GmbH, in Emsdetten, Germany and in Batavia, Illinois, USA under a quality control program with annual surveillance inspections by ICC-ES.

Find Current Report on www.icc-es.org or www.wedicorp.com

Subliner Dry Technical Properties



Installation Over Mortar Bed Showers / On Walls and Shower Floor

- | | |
|---|----------------------------|
| 01 wedi Sealant 620 | 05 Inside Corner Seal |
| 02 Bonding Flange Drain | 06 Outside Corner Seal |
| 03 Mortar bed structure with curb | 07 Modified thinset mortar |
| 04 Subliner Dry membrane in modified thinset mortar attached to primed drywall construction | 08 Sealing Tape |

! wedi Sealant 620 is used to waterproof all overlaps and connections.

Packaging and Sales

(2) roll sizes are available: 39 in. x 16 ft or 39 in. x 98 ft. No minimum or maximum order is required. To view product sizes, [click here](#). Scroll down to 'Technical Data' and then click 'Product Sizes'. Store flat.

Warranty

To view our 10, 15 & 20-year system warranties, [click here](#).

Training, Installation Resources and Technical Support

To view our training and workshop schedule, [click here](#).

To download our digital technical handbook, [click here](#).

To get in touch with your local technical sales support manager, [click here](#) and select your state. You'll be provided with contact information!

Architectural Support

- Virtual and in-person AIA Presentations for CEU's
- Specification assistance, technical drawings and more
- For more information, contact Austin Rott the Sales Manager Hospitality Division US & Canada at austin.rott@wedcorp.com or 310-279-9132.